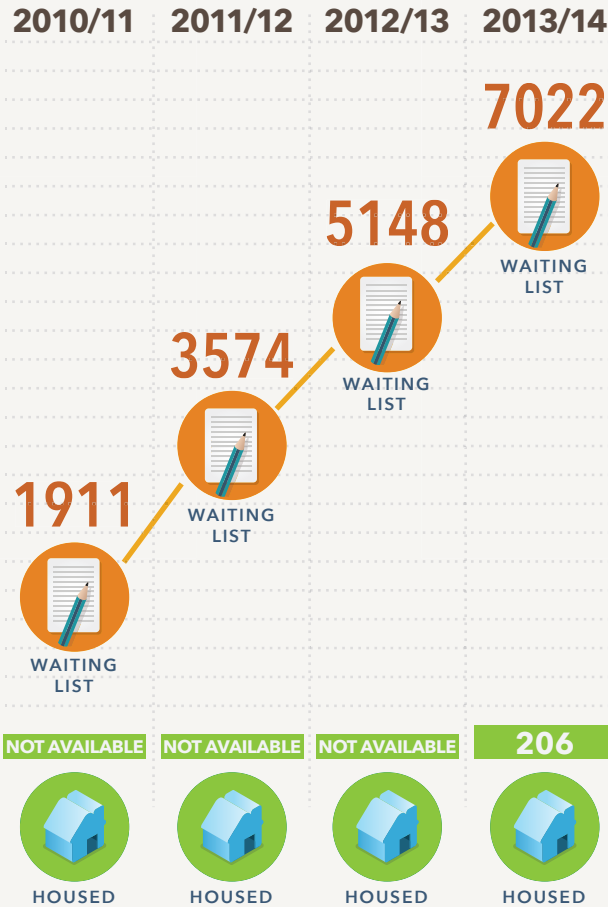


# TORONTO MENTAL HEALTH AND ADDICTIONS SUPPORTIVE HOUSING NETWORK

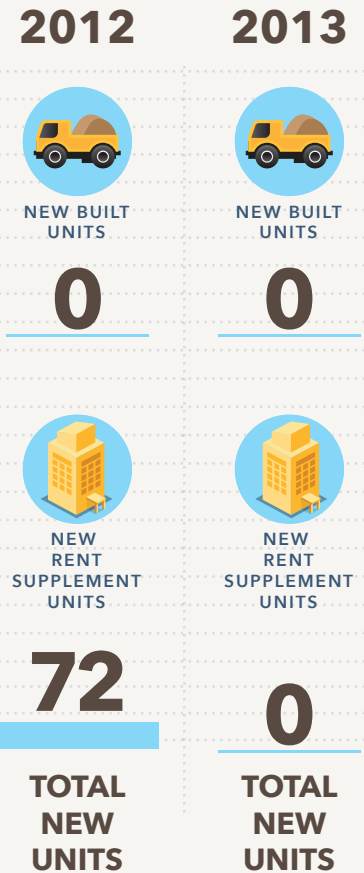
We are mental health and addiction (MHA) agencies providing housing and supports to individuals recovering from mental health and addiction issues who were formerly homeless or at risk of homelessness. Together we collectively own, manage or rent 4400 units of housing either under social housing or rent supplement programs. We assess progress in ending homelessness as measured in specific areas.

# 2013 PROGRESS REPORT

## PERSONS HOUSED THROUGH MENTAL HEALTH AND ADDICTIONS ACCESS WAITING LIST



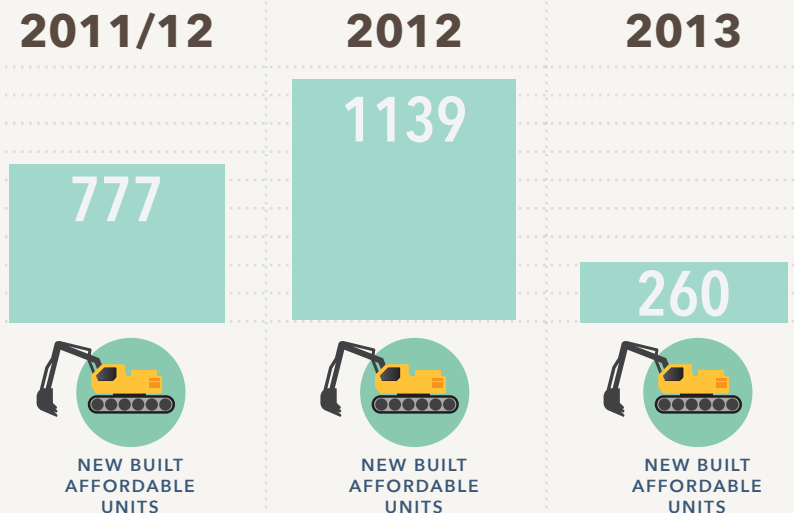
## NEW AFFORDABLE HOUSING MENTAL HEALTH AND ADDICTIONS



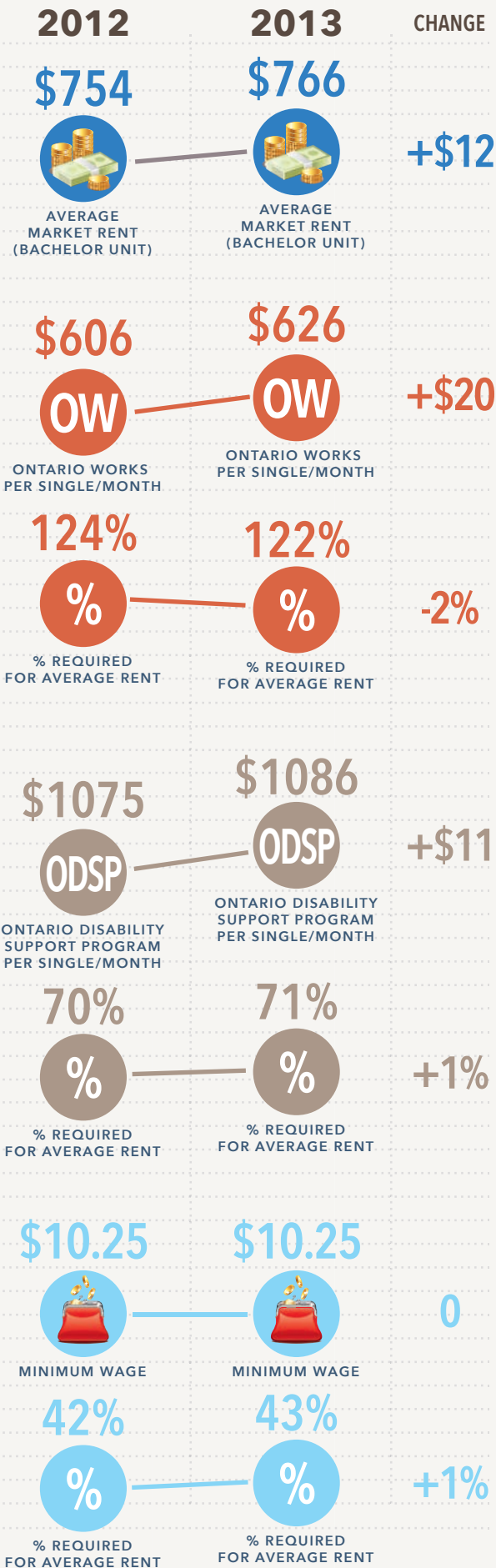
### HOUSING: WHY IS THIS IMPORTANT?

Save and affordable housing is key to health and well being of Toronto residents. Households must spend 30% or less of their income on housing, for it to be considered affordable. Expenditure of 50% or more greatly increases the risk of homelessness.

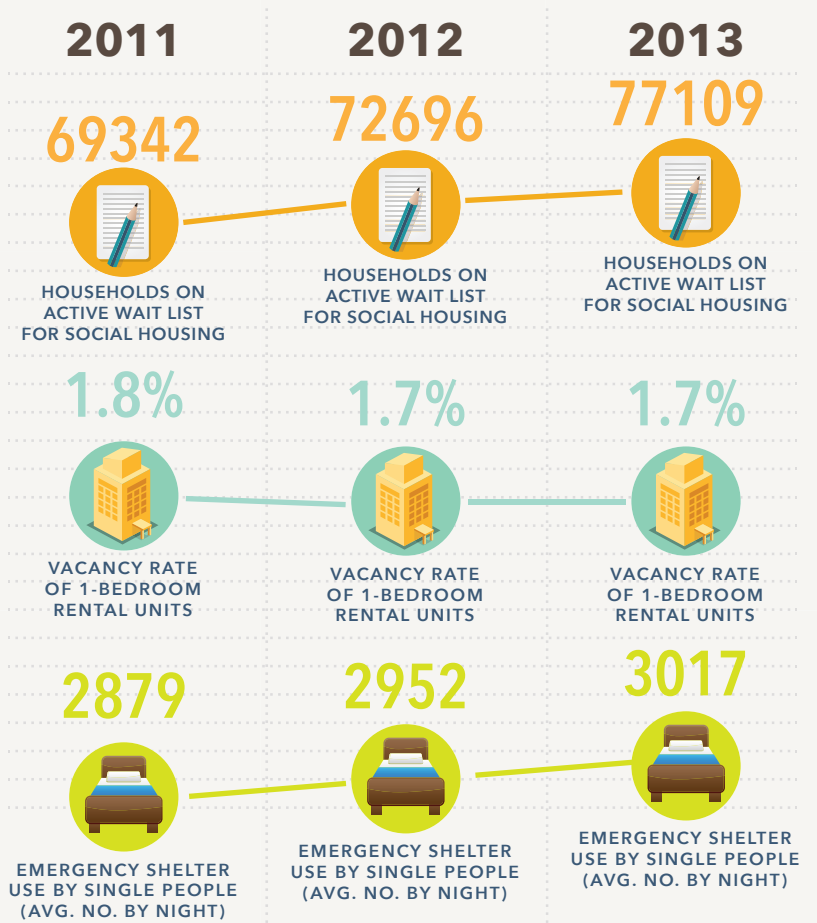
## NEW AFFORDABLE HOUSING CITY OF TORONTO NEW UNITS OF AFFORDABLE HOUSING OPENED (RENT IS 80% OF CMHC LOW END OF MARKET):



## AFFORDABILITY



## KEY HOUSING TRENDS CITY OF TORONTO



## LIST OF TORONTO MENTAL HEALTH AND ADDICTION SUPPORTIVE HOUSING NETWORK

- |   |  |
|---|--|
| Accommodation, Information and Support Inc. ("AIS") | John Howard Society Toronto                            |
| Bayview Community Services                          | Loft Community Services                                |
| CAMH  | Madison Community Services                             |
| Chai Tikvah Foundation                              | Mainstay Housing                                       |
| CMHA-Toronto  | Margaret's Housing and Community Support Services Inc. |
| Cota  | PARC   |
| Eden Community Homes                                | Pilot Place Society                                    |
| Fife House  | Progress Place Services                                |
| Fred Victor   | Regeneration Community Services                        |
| George Herman House                                 | St Jude Community Homes                                |
| Good Shepherd Non-Profit Homes Inc.                 | St. Stephen's Community House                          |
| Habitat Services                                    | Street Haven at the Crossroads                         |
| Hong Fook Mental Health Association                 | Woodgreen Community                                    |
| House of Compassion                                 | YWCA   |
| Houselink Community Homes                           |  |